

Oracle FLEXCUBE Core Banking

Branch Addition in FLEXCUBE-CORE
5.2.0.0.0

Part No. E71602-01

February 2016

ORACLE®

Branch Addition in FLEXCUBE-CORE
February 2016

Oracle Financial Services Software Limited
Oracle Park
Off Western Express Highway
Goregaon (East)
Mumbai, Maharashtra 400 063
India

Worldwide Inquiries:

Phone: +91 22 6718 3000

Fax: +91 22 6718 3001

www.oracle.com/financialservices/

Copyright © 2016, Oracle and/or its affiliates. All rights reserved.

Oracle and Java are registered trademarks of Oracle and/or its affiliates. Other names may be trademarks of their respective owners.

U.S. GOVERNMENT END USERS: Oracle programs, including any operating system, integrated software, any programs installed on the hardware, and/or documentation, delivered to U.S. Government end users are "commercial computer software" pursuant to the applicable Federal Acquisition Regulation and agency-specific supplemental regulations. As such, use, duplication, disclosure, modification, and adaptation of the programs, including any operating system, integrated software, any programs installed on the hardware, and/or documentation, shall be subject to license terms and license restrictions applicable to the programs. No other rights are granted to the U.S. Government.

This software or hardware is developed for general use in a variety of information management applications. It is not developed or intended for use in any inherently dangerous applications, including applications that may create a risk of personal injury. If you use this software or hardware in dangerous applications, then you shall be responsible to take all appropriate failsafe, backup, redundancy, and other measures to ensure its safe use. Oracle Corporation and its affiliates disclaim any liability for any damages caused by use of this software or hardware in dangerous applications.

This software and related documentation are provided under a license agreement containing restrictions on use and disclosure and are protected by intellectual property laws. Except as expressly permitted in your license agreement or allowed by law, you may not use, copy, reproduce, translate, broadcast, modify, license, transmit, distribute, exhibit, perform, publish or display any part, in any form, or by any means. Reverse engineering, disassembly, or decompilation of this software, unless required by law for interoperability, is prohibited.

The information contained herein is subject to change without notice and is not warranted to be error-free. If you find any errors, please report them to us in writing.

This software or hardware and documentation may provide access to or information on content, products and services from third parties. Oracle Corporation and its affiliates are not responsible for and expressly disclaim all warranties of any kind with respect to third-party content, products, and services. Oracle Corporation and its affiliates will not be responsible for any loss, costs, or damages incurred due to your access to or use of third-party content, products, or services.

Table of Contents

STEPS TO CREATE BRANCHES.....	2
ADDING BRANCHES IN REGISTRY	6

STEPS TO CREATE BRANCHES

1. Create new Entity in RCM01
2. Create nodal branch under the new entity in BAM03, which will report to the head office under main entity

Branch Master Maintenance*

Branch Code : 601

RCCU Details

Nodal Branch Entity Code : 601

Branch Details

Branch Name :	BRANCH 601	Branch Currency :	CNY ▼
Branch Short Name :	BRN601	CC Level :	8 ▼
Address :	Building 1	Reporting Branch :	9999
	Gao-Xin Road South,	IBCC Level :	8 ▼
	Shenzhen,China	Higher Level IBCC :	9999
City :	Shenzhen	Last Batch No :	6
State :	Guangdong	Clearing Sector Code :	2410
Zip Code :	518000	Main Branch :	0
Country :	CHINA	Computing Center :	1
Branch Type :	401-分行 ▼	<input type="checkbox"/> Tax Collecting Branch	
IFSC Code :		Tax Remitted to branch	

Department
 Flexcube Branch

3. Create other new branches under the nodal branch if needed

Branch Master Maintenance*

Branch Code : 610

RCCU Details

Nodal Branch Entity Code : 601

Branch Details

Branch Name :	BRANCH 610	Branch Currency :	CNY
Branch Short Name :	BRN610	CC Level :	7
Address :	Building 1	Reporting Branch :	601
	Gao-Xin Road South,	IBCC Level :	7
	Shenzhen,China	Higher Level IBCC :	601
City :	Shenzhen	Last Batch No :	6
State :	Guangdong	Clearing Sector Code :	2410
Zip Code :	518000	Main Branch :	0
Country :	CHINA	Computing Center :	1
Branch Type :	402-一级支行	<input type="checkbox"/> Tax Collecting Branch	
IFSC Code :		Tax Remitted to branch	
	<input type="checkbox"/> Department		
	<input checked="" type="checkbox"/> Flexcube Branch		

4. Create Tellers and do the Registry changes accordingly for the new branches(given in Section 2)

5. Patch the entries in rec_glpn for the new branches

6. Create the calendar for the new branches

7. Create customer with Bank customer types under nodal branch

8. Create new product for settlement account in CHM01, product class is "IB settlement Account"

9. Create new product for mirror account in CHM01, product class is "IB settlement Account"

10. Create settlement account under the bank customer for nodal branch in the reporting branch

11. Create mirror account under the bank customer for nodal branch in the nodal branch
12. OD limit can be set up for settlement account if needed
13. Modify the entity in RCM01 to link the settlement and mirror account accordingly

RCCU Participating Entity Maintenance*

Entity Code* : ... Entity Name :

Entity Type : ▼

Customer Information

Search Criteria : ▼ Search String : ...

Customer Id : Customer IC :

Full Name :

With-In Entity Preferences

Inter-Branch Accounting : Direct Hierarchy

Settlement Accounting Required :

Across Entity Preferences

Mirror Account : ...

Settlement Account : ...

Online limit validation required :

Close Entity :

14. If Settlement Accounting Required is checked in RCM01, settlement and mirror account should be maintain in RCM02 for the branches which report to nodal branches directly.

It is optional to maintain the settlement and mirror account in RCM02 for the branches which is not report to nodal branches directly. Detailed steps are given below:

- a. Create customer with Bank customer types under branch A
- b. Create settlement account under bank customer for branch A in the reporting branch
- c. Create mirror account under the bank customer for branch A in the branch A
- d. Add the settlement and mirror account in RCM02 for branch A

RCCU InterBranch Settlement Account Maintenance*

Entity Code :	<input type="text" value="601"/>	<input type="button" value="..."/>
Branch 1:	<input type="text" value="610"/>	<input type="button" value="..."/>
Branch 2:	<input type="text" value="601"/>	
Currency :	<input type="text" value="CNY"/>	

Customer Information

Search Criteria :	<input type="text"/>	Search String :	<input type="text"/>	<input type="button" value="..."/>
Customer Id :	<input type="text" value="1000000024"/>	Customer IC :	<input type="text"/>	
Full Name :	<input type="text"/>			

Settlement Accounts :

Mirror Account :	<input type="text" value="1000200000000125"/>	<input type="button" value="..."/>	Mirror Account Title :	<input type="text" value="B610"/>
Settlement Account :	<input type="text" value="1000100000000125"/>	<input type="button" value="..."/>	Settlement Account Title :	<input type="text" value="B610"/>

ADDING BRANCHES IN REGISTRY

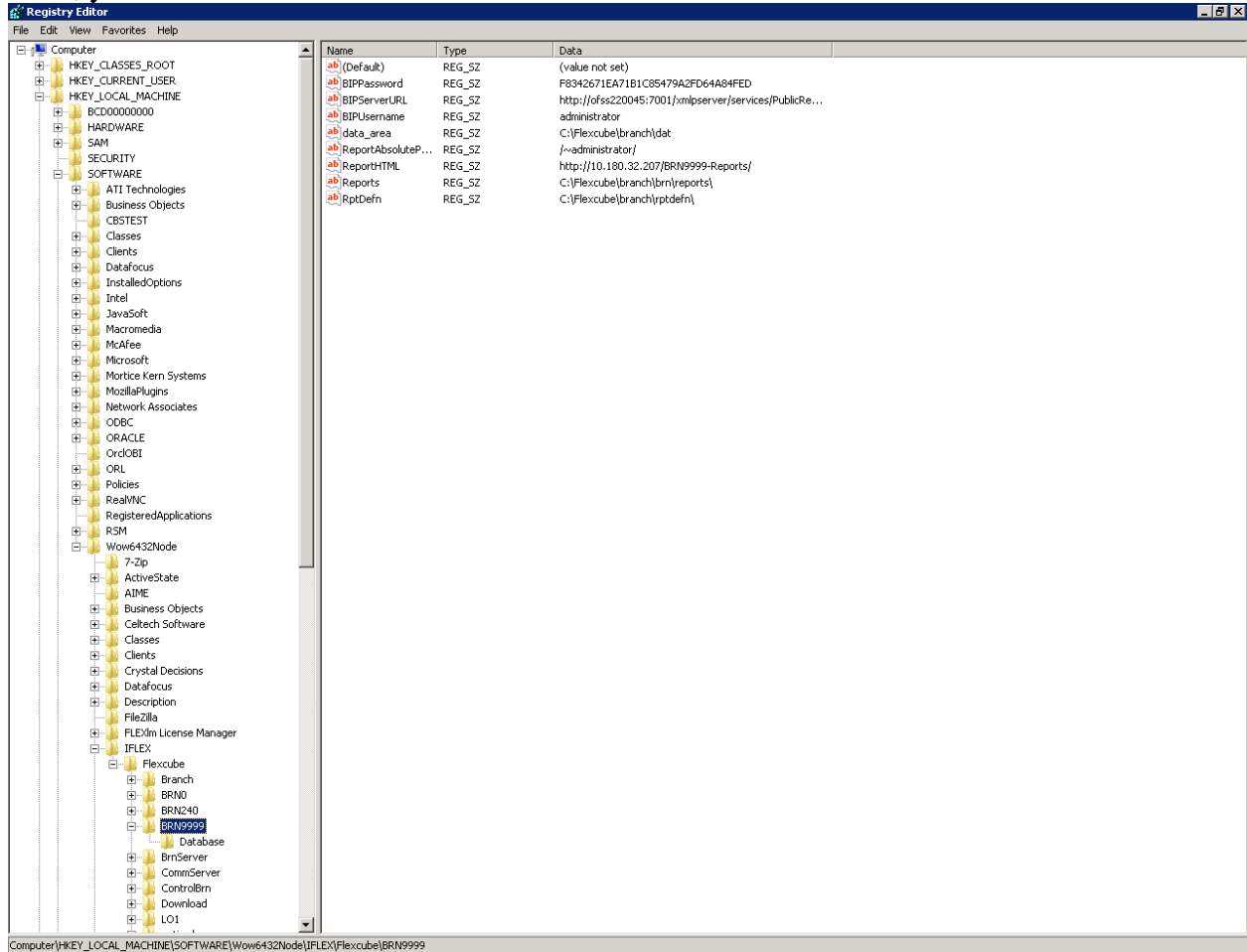
Initially when branch setup is done via OUI , only the default branch ‘**BRN9999**’ is created in registry.

To check this , type regedit in run .

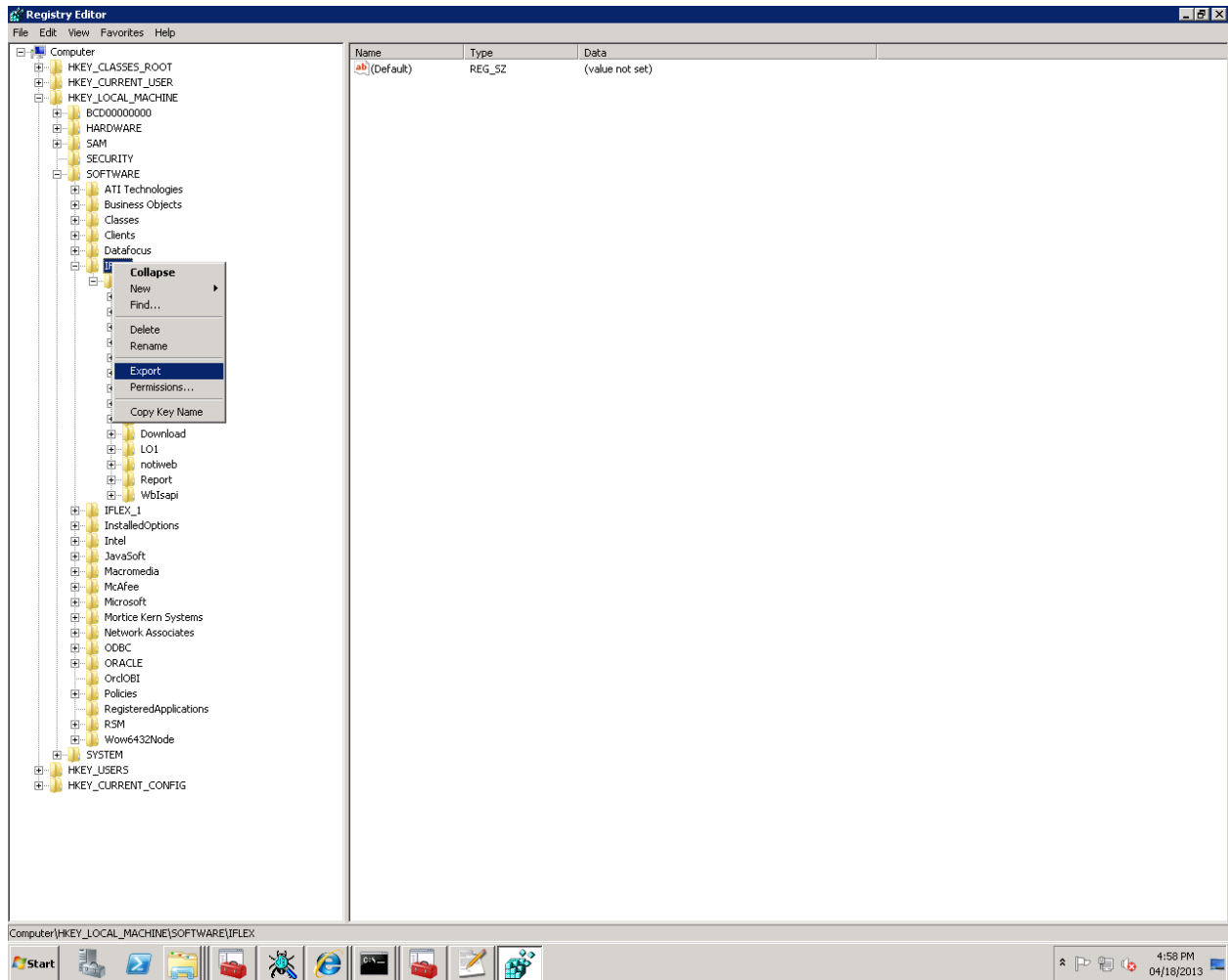
Goto : Regedit>>

computer>>HEY_LOCAL_MACHINE>>SOFTWARE>>wow6432Node>>IFLEX

Here , you will be able to see the entries for BRN9999.



For adding more branches initially we have to export the IFLEX folder in registry as shown below.



Then save it in any location for backup.

Open the registry with notepad++

```

7 [HKEY_LOCAL_MACHINE\SOFTWARE\Wow6432Node\IFLEX\Flexcube\Branch]
8
9 [HKEY_LOCAL_MACHINE\SOFTWARE\Wow6432Node\IFLEX\Flexcube\Branch\IE]
10 "PicklistXSL"="C:\\flexcube\\branch\\web\\branch\\picklist.xml"
11 "ScriptSource"="C:\\flexcube\\branch\\web\\branch\\screens\\javascripts\\"
12 "FormBuilderVerboseLogging"="N"
13 "FlexCache"="0"
14 "FlexCacheDescription"="0-No, 1-Picklist, 2-Full, 4-Udf"
15 "HntEngineSource"="C:\\flexcube\\branch\\web\\branch\\HntEngine\\"
16
17 [HKEY_LOCAL_MACHINE\SOFTWARE\Wow6432Node\IFLEX\Flexcube\Branch\IE\ENG]
18 "HTMLSource"="C:\\flexcube\\branch\\web\\branch\\screens\\xml\\eng\\"
19 "DOCSource"="C:\\flexcube\\branch\\web\\branch\\docs\\html\\eng\\"
20 "NLS_XMLPath"="C:\\flexcube\\branch\\web\\branch\\ut\\NLS\\"
21
22 [HKEY_LOCAL_MACHINE\SOFTWARE\Wow6432Node\IFLEX\Flexcube\Branch\QrySource]
23 "UIBaseQrySource"="C:\\flexcube\\branch\\web\\branch\\ut\\query\\qrystoreUIBase.xml"
24 "UIQrySource"="C:\\flexcube\\branch\\web\\branch\\ut\\query\\qrystoreUI.xml"
25 "QrySource"="C:\\flexcube\\branch\\web\\branch\\ut\\query\\qrystore.xml"
26
27 [HKEY_LOCAL_MACHINE\SOFTWARE\Wow6432Node\IFLEX\Flexcube\BRN9999]
28 "data_area"="C:\\flexcube\\branch\\dat"
29 "RptDefn"="C:\\flexcube\\branch\\rptdefn\\"
30 "Reports"="C:\\flexcube\\branch\\brn\\reports\\"
31 "ReportHTML"="ofss220274/"
32
33 [HKEY_LOCAL_MACHINE\SOFTWARE\Wow6432Node\IFLEX\Flexcube\BRN9999\Database]
34 "dbuserid"="CSOBITR2"
35 "dbdatasourcename"="tz9nt1478"
36 "dbpassword"="6FBFB6BA1DEBF4E6F1C4C430A5CD4F9B"
37 "CodEntity"="1"
38
39 [HKEY_LOCAL_MACHINE\SOFTWARE\Wow6432Node\IFLEX\Flexcube\BRN1]
40 "data_area"="C:\\flexcube\\branch\\dat"
41 "RptDefn"="C:\\flexcube\\branch\\rptdefn\\"
42 "Reports"="C:\\flexcube\\branch\\brn\\reports\\"
43 "ReportHTML"="//"
44
45 [HKEY_LOCAL_MACHINE\SOFTWARE\Wow6432Node\IFLEX\Flexcube\BRN1\Database]
46 "dbuserid"="CSOBITR2"
47 "dbdatasourcename"="tz9nt1478"
48 "dbpassword"="6FBFB6BA1DEBF4E6F1C4C430A5CD4F9B"
49 "CodEntity"="1"
50
51 [HKEY_LOCAL_MACHINE\SOFTWARE\Wow6432Node\IFLEX\Flexcube\BRN5]
52 "data_area"="C:\\flexcube\\branch\\dat"
53 "RptDefn"="C:\\flexcube\\branch\\rptdefn\\"
54 "Reports"="C:\\flexcube\\branch\\brn\\reports\\"

```

Any registry entries which are under a key specific to 'BRN9999' or '9999' need to be recreated with the new branch code and copied under the entry for 9999. The entries which need to be recreated are given below :

```

1.)
[HKEY_LOCAL_MACHINE\SOFTWARE\Wow6432Node\IFLEX\Flexcube\BRN9999]
"data_area"="C:\\Flexcube\\branch\\dat"
"RptDefn"="C:\\Flexcube\\branch\\rptdefn\\"
"Reports"="C:\\Flexcube\\branch\\reports\\"
"ReportHTML"="flexcube_user"

```

```

[HKEY_LOCAL_MACHINE\SOFTWARE\Wow6432Node\IFLEX\Flexcube\BRN9999\Datase]
"dbuserid"="fcrb51"
"dbdatasourcename"="flexcn51"
"dbpassword"="E4CBC33CA96CA63839E2E2E0A437F332"
"CodEntity"="1"

```

```

2.)
[HKEY_LOCAL_MACHINE\SOFTWARE\Wow6432Node\IFLEX\Flexcube\BrnServer\9999]

```

[HKEY_LOCAL_MACHINE\SOFTWARE\Wow6432Node\IFLEX\Flexcube\BrnServer\9999\Appls]

[HKEY_LOCAL_MACHINE\SOFTWARE\Wow6432Node\IFLEX\Flexcube\BrnServer\9999\Appls\0]

"ClientCode"=dword:00000001
"ServerCode"=dword:00000001
"MsgTimeOut"=dword:00000000
"ApplCode"=dword:00000001
"CLSIDString"="{3C622470-3D65-11D4-93F0-0090278E3867}"
"IIDString"="{3C62246F-3D65-11D4-93F0-0090278E3867}"

[HKEY_LOCAL_MACHINE\SOFTWARE\Wow6432Node\IFLEX\Flexcube\BrnServer\9999\Services]

[HKEY_LOCAL_MACHINE\SOFTWARE\Wow6432Node\IFLEX\Flexcube\BrnServer\9999\Services\0]

"flg_auto_start"=dword:00000001
"num_min_appl_wrk_thrds"=dword:00000001
"num_max_appl_wrk_thrds"=dword:00000001
"num_min_client_intf_thrds"=dword:00000001
"num_max_client_intf_thrds"=dword:00000001
"num_min_server_intf_thrds"=dword:00000001
"num_max_server_intf_thrds"=dword:00000001
"appl_name"="CONSOLE"
"msg_time_out"=dword:00000000
"appl_code"=dword:00000000

[HKEY_LOCAL_MACHINE\SOFTWARE\Wow6432Node\IFLEX\Flexcube\BrnServer\9999\Services\1]

"appl_code"=dword:00000001
"flg_auto_start"=dword:00000001
"num_min_appl_wrk_thrds"=dword:00000004
"num_max_appl_wrk_thrds"=dword:00000005
"num_min_client_intf_thrds"=dword:00000001
"num_max_client_intf_thrds"=dword:00000005
"num_min_server_intf_thrds"=dword:00000001
"num_max_server_intf_thrds"=dword:00000005
"appl_name"="TP"
"msg_time_out"=dword:00000000
"flg_compress"=dword:00000001
"host_connect"="HTTP"

[HKEY_LOCAL_MACHINE\SOFTWARE\Wow6432Node\IFLEX\Flexcube\BrnServer\9999\Services\1\client]

"code"=dword:00000001
"name"="webbranch isapi"
"transport_layer"="socket"

[HKEY_LOCAL_MACHINE\SOFTWARE\Wow6432Node\IFLEX\Flexcube\BrnServer\9999\Services\1\client\socket]
"ip_addr"="127.0.0.1"
"port"=dword:00061a76
"protocol"=dword:00000002
"lnk_down_tm"=dword:00000000

[HKEY_LOCAL_MACHINE\SOFTWARE\Wow6432Node\IFLEX\Flexcube\BrnServer\9999\Services\1\server]
"code"=dword:00000003
"name"="mqserver"
"transport_layer"="mq"

[HKEY_LOCAL_MACHINE\SOFTWARE\Wow6432Node\IFLEX\Flexcube\BrnServer\9999\Services\1\server\HTTPServer]
"HTTPServer1"="http://ofss3131523:7302/fcrjpaymentsweb/PaymentServlet"
"OLTPHTTP"="http://ofss3131523:7302/FCRJOLTPWeb/OLTPListener"

[HKEY_LOCAL_MACHINE\SOFTWARE\Wow6432Node\IFLEX\Flexcube\BrnServer\9999\Services\1\server\mq]
"que_manager"="FCBOltpQM"
"server_conn_chanel"="SERVERCH"
"lnk_down_tm"=dword:000000b4
"lnk_down_retry_tm"=dword:000000b4
"port"=dword:0000058c
"ip_addr"="DUMMYIP"
"protocol"=dword:00000002
"initial_pool_sz"=dword:0000000a
"max_pool_sz"=dword:00000014
"Server_trace_area"=""
"Server_trace_enabled"=dword:00000000
"CipherSpec"="RC4_SHA_US"
"SSLKEYR"="SSLKEYPATH"
"res_que"="OLTPRESQ"
"req_que"="OLTPREQQ"
"flg_ssl"=dword:00000000

[HKEY_LOCAL_MACHINE\SOFTWARE\Wow6432Node\IFLEX\Flexcube\BrnServer\9999\Services\1\server\socket]
"protocol"=dword:00000002
"lnk_down_tm"=dword:0000001e
"lnk_down_retry_tm"=dword:0000000a

"port"=dword:000493d6
"ip_addr"="ofss3131523"

[HKEY_LOCAL_MACHINE\SOFTWARE\Wow6432Node\IFLEX\Flexcube\BrnServer\9999\Services\2]

"appl_code"=dword:00000002
"appl_name"="TF"
"flg_auto_start"=dword:00000001
"msg_time_out"=dword:00000000
"num_max_appl_wrk_thrds"=dword:00000001
"num_min_appl_wrk_thrds"=dword:00000001
"num_max_client_intf_thrds"=dword:00000000
"num_min_client_intf_thrds"=dword:00000000
"num_max_server_intf_thrds"=dword:00000001
"num_min_server_intf_thrds"=dword:00000001
"flg_compress"=dword:00000001

[HKEY_LOCAL_MACHINE\SOFTWARE\Wow6432Node\IFLEX\Flexcube\BrnServer\9999\Services\2\clients]

"tank_tm"=dword:0000001e
"recovery_tm"=dword:0000001e

[HKEY_LOCAL_MACHINE\SOFTWARE\Wow6432Node\IFLEX\Flexcube\BrnServer\9999\Services\2\clients\9999]

[HKEY_LOCAL_MACHINE\SOFTWARE\Wow6432Node\IFLEX\Flexcube\BrnServer\9999\Services\2\server]

"code"=dword:00000003
"name"="mqserver"
"transport_layer"="mq"

[HKEY_LOCAL_MACHINE\SOFTWARE\Wow6432Node\IFLEX\Flexcube\BrnServer\9999\Services\2\server\mq]

"que_manager"="FCBOltpQM"
"server_conn_chanel"="SERVERCH"
"lnk_down_tm"=dword:000000b4
"lnk_down_retry_tm"=dword:000000b4
"port"=dword:0000058c
"ip_addr"="DUMMYIP"
"protocol"=dword:00000002
"initial_pool_sz"=dword:0000000a
"max_pool_sz"=dword:00000014
"Server_trace_area"=""
"Server_trace_enabled"=dword:00000000
"CipherSpec"="RC4_SHA_US"
"SSLKEYR"="SSLKEYPATH"

"res_que"="OLTPRESQ"
"req_que"="OLTPREQQ"
"flg_ssl"=dword:00000000

[HKEY_LOCAL_MACHINE\SOFTWARE\Wow6432Node\FLEX\Flexcube\BrnServer\9999\Services\2\server\socket]
"protocol"=dword:00000002
"lnk_down_tm"=dword:0000001e
"lnk_down_retry_tm"=dword:0000000a
"port"=dword:000493d6
"ip_addr"="ofss3131523"

3.)

[HKEY_LOCAL_MACHINE\SOFTWARE\Wow6432Node\FLEX\Flexcube\CommServer\9999]

[HKEY_LOCAL_MACHINE\SOFTWARE\Wow6432Node\FLEX\Flexcube\CommServer\9999\CS Parameters]
"cs_ip_addr"="ofss3131523"
"cs_port_no"=dword:000493d6
"cs_lnk_down_tm"=dword:00000000
"host_ip_addr"="ofss3131523"
"host_dh_port_no"=dword:00001866
"host_fts_port_no"=dword:00001867
"host_dh_lnk_down_tm"=dword:0000001e
"host_fts_lnk_down_tm"=dword:0000001e
"host_lnk_down_retry_tm"=dword:0000000a
"wsi_port_no"=dword:000493d7
"wsi_stats_tm"=dword:0000003c
"gwi_port_no"=dword:000493d8
"gwi_stats_tm"=dword:0000003c
"fts_port_no"=dword:000493d9
"fts_stats_tm"=dword:0000003c
"recovery_flag"=dword:00000001
"tank_flush_tm"=dword:00000005
"trace_flag"=dword:00000000
"msg_time_out"=dword:0000003c
"cs_area"="C:\Flexcube\branch\log"
"fts_keep_alive_flag"=dword:00000000
"fts_keep_alive_tm"=dword:00000000
"branch_name"="demo"
"cons_port_no"=dword:000493da
"host_device_code"="9999"
"ENCRYPTION_ON"=dword:00000000
"host_name"=""

[HKEY_LOCAL_MACHINE\SOFTWARE\Wow6432Node\IFLEX\Flexcube\CommServer\999
9\CS Services]

[HKEY_LOCAL_MACHINE\SOFTWARE\Wow6432Node\IFLEX\Flexcube\CommServer\999
9\CS Services\0]

"appl_code"=dword:00000000
"appl_name"="WSI"
"flg_auto_start"=dword:00000001
"num_max_appl_wrk_thrds"=dword:00000004
"num_max_tcpip_wrk_thrds"=dword:00000001
"num_min_tcpip_wrk_thrds"=dword:00000001
"num_min_appl_wrk_thrds"=dword:00000004

[HKEY_LOCAL_MACHINE\SOFTWARE\Wow6432Node\IFLEX\Flexcube\CommServer\999
9\CS Services\1]

"appl_code"=dword:00000001
"appl_name"="GWI"
"flg_auto_start"=dword:00000001
"num_max_appl_wrk_thrds"=dword:00000004
"num_max_tcpip_wrk_thrds"=dword:00000001
"num_min_tcpip_wrk_thrds"=dword:00000001
"num_min_appl_wrk_thrds"=dword:00000001

[HKEY_LOCAL_MACHINE\SOFTWARE\Wow6432Node\IFLEX\Flexcube\CommServer\999
9\CS Services\2]

"appl_code"=dword:00000002
"appl_name"="FTS"
"flg_auto_start"=dword:00000001
"num_max_appl_wrk_thrds"=dword:00000004
"num_max_tcpip_wrk_thrds"=dword:00000001
"num_min_tcpip_wrk_thrds"=dword:00000001
"num_min_appl_wrk_thrds"=dword:00000002

[HKEY_LOCAL_MACHINE\SOFTWARE\Wow6432Node\IFLEX\Flexcube\CommServer\999
9\CS Services\3]

"appl_code"=dword:00000003
"appl_name"="CONS"
"flg_auto_start"=dword:00000001
"num_max_appl_wrk_thrds"=dword:00000001
"num_max_tcpip_wrk_thrds"=dword:00000001
"num_min_tcpip_wrk_thrds"=dword:00000001
"num_min_appl_wrk_thrds"=dword:00000001

4.)

[HKEY_LOCAL_MACHINE\SOFTWARE\Wow6432Node\IFLEX\Flexcube\Download\DL1\S
torage\BRN9999]

```
"CLSID"="{EBDF5EFA-E206-4819-A027-435794E30CEB}"
"IID"="{22AAFFA6-E0F0-4160-8912-86C29C8B94EA}"
```

```
[HKEY_LOCAL_MACHINE\SOFTWARE\Wow6432Node\IFLEX\Flexcube\Download\DL1\St
orage\BRN9999\interface]
"Dsn"="flexcn51"
>Password"="E4CBC33CA96CA63839E2E2E0A437F332"
"UserId"="fcrb51"
"TemplateURI"="C:\\Flexcube\\branch\\tbl\\"
"DataSetURI"="C:\\Flexcube\\branch\\dataseturi\\"
"CodEntity"="1"
```

5.)

```
[HKEY_LOCAL_MACHINE\SOFTWARE\Wow6432Node\IFLEX\Flexcube\Report\BRN9999
]
"dbuserid"="fcrb51"
"dbdatasourcename"="flexcn51"
"dbpassword"="E4CBC33CA96CA63839E2E2E0A437F332"
"CodEntity"="1"
"CPDbDataSourceName"="flexcn51"
"CPDbPassword"="E4CBC33CA96CA63839E2E2E0A437F332"
"CPDbUserId"="fcrb51"
"CRDbDataSourceName"="flexcn51"
"CRDbPassword"="E4CBC33CA96CA63839E2E2E0A437F332"
"CRDbUserId"="fcrb51"
```

In the above 5 registry sections, replace ‘9999’ with the branch code which is to be added. Then copy the changed sections (with new branch code) above or below the 9999 sections at the appropriate place in the registry.

The below given example is for the addition of branch code ‘1’ in the registry.

The entries in red are the entries for the branch to be added , i.e. ‘1’.

Eg.

1.)

```
[HKEY_LOCAL_MACHINE\SOFTWARE\Wow6432Node\IFLEX\Flexcube\BRN9999]
"data_area"="C:\\Flexcube\\branch\\dat"
"RptDefn"="C:\\Flexcube\\branch\\rptdefn\\"
"Reports"="C:\\Flexcube\\branch\\reports\\"
"ReportHTML"="flexcube_user"
```


[HKEY_LOCAL_MACHINE\SOFTWARE\Wow6432Node\FLEX\Flexcube\BRN9999\Database]

"dbuserid"="fcrb51"

"dbdatasourcename"="flexcn51"

"dbpassword"="E4CBC33CA96CA63839E2E2E0A437F332"

"CodEntity"="1"

[HKEY_LOCAL_MACHINE\SOFTWARE\Wow6432Node\FLEX\Flexcube\BRN1]

"data_area"="C:\\Flexcube\\branch\\dat"

"RptDefn"="C:\\Flexcube\\branch\\rptdefn\\"

"Reports"="C:\\Flexcube\\branch\\reports\\"

"ReportHTML"="flexcube_user"

[HKEY_LOCAL_MACHINE\SOFTWARE\Wow6432Node\FLEX\Flexcube\BRN1\Database]

"dbuserid"="fcrb51"

"dbdatasourcename"="flexcn51"

"dbpassword"="E4CBC33CA96CA63839E2E2E0A437F332"

"CodEntity"="1"

2.)

[HKEY_LOCAL_MACHINE\SOFTWARE\Wow6432Node\FLEX\Flexcube\BrnServer\9999]

[HKEY_LOCAL_MACHINE\SOFTWARE\Wow6432Node\FLEX\Flexcube\BrnServer\9999\Appls]

[HKEY_LOCAL_MACHINE\SOFTWARE\Wow6432Node\FLEX\Flexcube\BrnServer\9999\Appls\0]

"ClientCode"=dword:00000001

"ServerCode"=dword:00000001

"MsgTimeOut"=dword:00000000

"ApplCode"=dword:00000001

"CLSIDString"="{3C622470-3D65-11D4-93F0-0090278E3867}"

"IIDString"="{3C62246F-3D65-11D4-93F0-0090278E3867}"

[HKEY_LOCAL_MACHINE\SOFTWARE\Wow6432Node\FLEX\Flexcube\BrnServer\9999\Services]

[HKEY_LOCAL_MACHINE\SOFTWARE\Wow6432Node\FLEX\Flexcube\BrnServer\9999\Services\0]

"flg_auto_start"=dword:00000001

"num_min_appl_wrk_thrds"=dword:00000001

"num_max_appl_wrk_thrds"=dword:00000001

"num_min_client_intf_thrds"=dword:00000001

"num_max_client_intf_thrds"=dword:00000001

"num_min_server_intf_thrds"=dword:00000001

"num_max_server_intf_thrds"=dword:00000001

"appl_name"="CONSOLE"
"msg_time_out"=dword:00000000
"appl_code"=dword:00000000

[HKEY_LOCAL_MACHINE\SOFTWARE\Wow6432Node\FLEX\Flexcube\BrnServer\9999\Services\1]

"appl_code"=dword:00000001
"flg_auto_start"=dword:00000001
"num_min_appl_wrk_thrds"=dword:00000004
"num_max_appl_wrk_thrds"=dword:00000005
"num_min_client_intf_thrds"=dword:00000001
"num_max_client_intf_thrds"=dword:00000005
"num_min_server_intf_thrds"=dword:00000001
"num_max_server_intf_thrds"=dword:00000005
"appl_name"="TP"
"msg_time_out"=dword:00000000
"flg_compress"=dword:00000001
"host_connect"="HTTP"

[HKEY_LOCAL_MACHINE\SOFTWARE\Wow6432Node\FLEX\Flexcube\BrnServer\9999\Services\1\client]

"code"=dword:00000001
"name"="webbranch isapi"
"transport_layer"="socket"

[HKEY_LOCAL_MACHINE\SOFTWARE\Wow6432Node\FLEX\Flexcube\BrnServer\9999\Services\1\client\socket]

"ip_addr"="127.0.0.1"
"port"=dword:00061a76
"protocol"=dword:00000002
"lnk_down_tm"=dword:00000000

[HKEY_LOCAL_MACHINE\SOFTWARE\Wow6432Node\FLEX\Flexcube\BrnServer\9999\Services\1\server]

"code"=dword:00000003
"name"="mqserver"
"transport_layer"="mq"

[HKEY_LOCAL_MACHINE\SOFTWARE\Wow6432Node\FLEX\Flexcube\BrnServer\9999\Services\1\server\HTTPServer]

"HTTPServer1"="http://ofss3131523:7302/fcrjpaymentsweb/PaymentServlet"
"OLTPHTTP"="http://ofss3131523:7302/FCRJOLTPWeb/OLTPListener"

[HKEY_LOCAL_MACHINE\SOFTWARE\Wow6432Node\FLEX\Flexcube\BrnServer\9999\Services\1\server\mq]

"que_manager"="FCBOltpQM"

"server_conn_chanel"="SERVERCH"
"lnk_down_tm"=dword:000000b4
"lnk_down_retry_tm"=dword:000000b4
"port"=dword:0000058c
"ip_addr"="DUMMYIP"
"protocol"=dword:00000002
"initial_pool_sz"=dword:0000000a
"max_pool_sz"=dword:00000014
"Server_trace_area"=""
"Server_trace_enabled"=dword:00000000
"CipherSpec"="RC4_SHA_US"
"SSLKEYR"="SSLKEYPATH"
"res_que"="OLTPRESQ"
"req_que"="OLTPREQQ"
"flg_ssl"=dword:00000000

[HKEY_LOCAL_MACHINE\SOFTWARE\Wow6432Node\IFLEX\Flexcube\BrnServer\9999\Services\1\server\socket]

"protocol"=dword:00000002
"lnk_down_tm"=dword:0000001e
"lnk_down_retry_tm"=dword:0000000a
"port"=dword:000493d6
"ip_addr"="ofss3131523"

[HKEY_LOCAL_MACHINE\SOFTWARE\Wow6432Node\IFLEX\Flexcube\BrnServer\9999\Services\2]

"appl_code"=dword:00000002
"appl_name"="TF"
"flg_auto_start"=dword:00000001
"msg_time_out"=dword:00000000
"num_max_appl_wrk_thrds"=dword:00000001
"num_min_appl_wrk_thrds"=dword:00000001
"num_max_client_intf_thrds"=dword:00000000
"num_min_client_intf_thrds"=dword:00000000
"num_max_server_intf_thrds"=dword:00000001
"num_min_server_intf_thrds"=dword:00000001
"flg_compress"=dword:00000001

[HKEY_LOCAL_MACHINE\SOFTWARE\Wow6432Node\IFLEX\Flexcube\BrnServer\9999\Services\2\clients]

"tank_tm"=dword:0000001e
"recovery_tm"=dword:0000001e

[HKEY_LOCAL_MACHINE\SOFTWARE\Wow6432Node\IFLEX\Flexcube\BrnServer\9999\Services\2\clients\9999]

```
[HKEY_LOCAL_MACHINE\SOFTWARE\Wow6432Node\IFLEX\Flexcube\BrnServer\9999\Services\2\server]
"code"=dword:00000003
"name"="mqserver"
"transport_layer"="mq"
```

```
[HKEY_LOCAL_MACHINE\SOFTWARE\Wow6432Node\IFLEX\Flexcube\BrnServer\9999\Services\2\server\mq]
"que_manager"="FCBOltpQM"
"server_conn_chanel"="SERVERCH"
"lnk_down_tm"=dword:000000b4
"lnk_down_retry_tm"=dword:000000b4
"port"=dword:0000058c
"ip_addr"="DUMMYIP"
"protocol"=dword:00000002
"initial_pool_sz"=dword:0000000a
"max_pool_sz"=dword:00000014
"Server_trace_area"=""
"Server_trace_enabled"=dword:00000000
"CipherSpec"="RC4_SHA_US"
"SSLKEYR"="SSLKEYPATH"
"res_que"="OLTPRESQ"
"req_que"="OLTPREQQ"
"flg_ssl"=dword:00000000
```

```
[HKEY_LOCAL_MACHINE\SOFTWARE\Wow6432Node\IFLEX\Flexcube\BrnServer\9999\Services\2\server\socket]
"protocol"=dword:00000002
"lnk_down_tm"=dword:0000001e
"lnk_down_retry_tm"=dword:0000000a
"port"=dword:000493d6
"ip_addr"="ofss3131523"
```

```
[HKEY_LOCAL_MACHINE\SOFTWARE\Wow6432Node\IFLEX\Flexcube\BrnServer\1]
```

```
[HKEY_LOCAL_MACHINE\SOFTWARE\Wow6432Node\IFLEX\Flexcube\BrnServer\1\Appls]
```

```
[HKEY_LOCAL_MACHINE\SOFTWARE\Wow6432Node\IFLEX\Flexcube\BrnServer\1\Appls\0]
"ClientCode"=dword:00000001
"ServerCode"=dword:00000001
"MsgTimeOut"=dword:00000000
"ApplCode"=dword:00000001
"CLSIDString"="{3C622470-3D65-11D4-93F0-0090278E3867}"
"IIDString"="{3C62246F-3D65-11D4-93F0-0090278E3867}"
```

[HKEY_LOCAL_MACHINE\SOFTWARE\Wow6432Node\IFLEX\Flexcube\BrnServer\1\Services]

[HKEY_LOCAL_MACHINE\SOFTWARE\Wow6432Node\IFLEX\Flexcube\BrnServer\1\Services\0]

"flg_auto_start"=dword:00000001
"num_min_appl_wrk_thrds"=dword:00000001
"num_max_appl_wrk_thrds"=dword:00000001
"num_min_client_intf_thrds"=dword:00000001
"num_max_client_intf_thrds"=dword:00000001
"num_min_server_intf_thrds"=dword:00000001
"num_max_server_intf_thrds"=dword:00000001
"appl_name"="CONSOLE"
"msg_time_out"=dword:00000000
"appl_code"=dword:00000000

[HKEY_LOCAL_MACHINE\SOFTWARE\Wow6432Node\IFLEX\Flexcube\BrnServer\1\Services\1]

"appl_code"=dword:00000001
"flg_auto_start"=dword:00000001
"num_min_appl_wrk_thrds"=dword:00000004
"num_max_appl_wrk_thrds"=dword:00000005
"num_min_client_intf_thrds"=dword:00000001
"num_max_client_intf_thrds"=dword:00000005
"num_min_server_intf_thrds"=dword:00000001
"num_max_server_intf_thrds"=dword:00000005
"appl_name"="TP"
"msg_time_out"=dword:00000000
"flg_compress"=dword:00000001
"host_connect"="HTTP"

[HKEY_LOCAL_MACHINE\SOFTWARE\Wow6432Node\IFLEX\Flexcube\BrnServer\1\Services\1\client]

"code"=dword:00000001
"name"="webbranch isapi"
"transport_layer"="socket"

[HKEY_LOCAL_MACHINE\SOFTWARE\Wow6432Node\IFLEX\Flexcube\BrnServer\1\Services\1\client\socket]

"ip_addr"="127.0.0.1"
"port"=dword:00061a76
"protocol"=dword:00000002
"lnk_down_tm"=dword:00000000

[HKEY_LOCAL_MACHINE\SOFTWARE\Wow6432Node\IFLEX\Flexcube\BrnServer\1\Services\1\server]

"code"=dword:00000003
"name"="mqserver"
"transport_layer"="mq"

[HKEY_LOCAL_MACHINE\SOFTWARE\Wow6432Node\IFLEX\Flexcube\BrnServer\1\Services\1\server\HTTPServer]
"HTTPServer1"="http://ofss3131523:7302/fcrjpaymentsweb/PaymentServlet"
"OLTPHTTP"="http://ofss3131523:7302/FCRJOLTPWeb/OLTPListener"

[HKEY_LOCAL_MACHINE\SOFTWARE\Wow6432Node\IFLEX\Flexcube\BrnServer\1\Services\1\server\mq]
"que_manager"="FCBOItpQM"
"server_conn_chanel"="SERVERCH"
"lnk_down_tm"=dword:000000b4
"lnk_down_retry_tm"=dword:000000b4
"port"=dword:0000058c
"ip_addr"="DUMMYIP"
"protocol"=dword:00000002
"initial_pool_sz"=dword:0000000a
"max_pool_sz"=dword:00000014
"Server_trace_area"=""
"Server_trace_enabled"=dword:00000000
"CipherSpec"="RC4_SHA_US"
"SSLKEYR"="SSLKEYPATH"
"res_que"="OLTPRESQ"
"req_que"="OLTPREQQ"
"flg_ssl"=dword:00000000

[HKEY_LOCAL_MACHINE\SOFTWARE\Wow6432Node\IFLEX\Flexcube\BrnServer\1\Services\1\server\socket]
"protocol"=dword:00000002
"lnk_down_tm"=dword:0000001e
"lnk_down_retry_tm"=dword:0000000a
"port"=dword:000493d6
"ip_addr"="ofss3131523"

[HKEY_LOCAL_MACHINE\SOFTWARE\Wow6432Node\IFLEX\Flexcube\BrnServer\1\Services\2]
"appl_code"=dword:00000002
"appl_name"="TF"
"flg_auto_start"=dword:00000001
"msg_time_out"=dword:00000000
"num_max_appl_wrk_thrds"=dword:00000001
"num_min_appl_wrk_thrds"=dword:00000001
"num_max_client_intf_thrds"=dword:00000000
"num_min_client_intf_thrds"=dword:00000000

"num_max_server_intf_thrds"=dword:00000001
"num_min_server_intf_thrds"=dword:00000001
"flg_compress"=dword:00000001

[HKEY_LOCAL_MACHINE\SOFTWARE\Wow6432Node\FLEX\Flexcube\BrnServer\1\Services\2\clients]

"tank_tm"=dword:0000001e
"recovery_tm"=dword:0000001e

[HKEY_LOCAL_MACHINE\SOFTWARE\Wow6432Node\FLEX\Flexcube\BrnServer\1\Services\2\clients\1]

[HKEY_LOCAL_MACHINE\SOFTWARE\Wow6432Node\FLEX\Flexcube\BrnServer\1\Services\2\server]

"code"=dword:00000003
"name"="mqserver"
"transport_layer"="mq"

[HKEY_LOCAL_MACHINE\SOFTWARE\Wow6432Node\FLEX\Flexcube\BrnServer\1\Services\2\server\mq]

"que_manager"="FCBOltpQM"
"server_conn_chanel"="SERVERCH"
"lnk_down_tm"=dword:000000b4
"lnk_down_retry_tm"=dword:000000b4
"port"=dword:0000058c
"ip_addr"="DUMMYIP"
"protocol"=dword:00000002
"initial_pool_sz"=dword:0000000a
"max_pool_sz"=dword:00000014
"Server_trace_area"=""
"Server_trace_enabled"=dword:00000000
"CipherSpec"="RC4_SHA_US"
"SSLKEYR"="SSLKEYPATH"
"res_que"="OLTPRESQ"
"req_que"="OLTPREQQ"
"flg_ssl"=dword:00000000

[HKEY_LOCAL_MACHINE\SOFTWARE\Wow6432Node\FLEX\Flexcube\BrnServer\1\Services\2\server\socket]

"protocol"=dword:00000002
"lnk_down_tm"=dword:0000001e
"lnk_down_retry_tm"=dword:0000000a
"port"=dword:000493d6
"ip_addr"="ofss3131523"

3.)

[HKEY_LOCAL_MACHINE\SOFTWARE\Wow6432Node\IFLEX\Flexcube\CommServer\999
9]

[HKEY_LOCAL_MACHINE\SOFTWARE\Wow6432Node\IFLEX\Flexcube\CommServer\999
9\CS Parameters]

"cs_ip_addr"="ofss3131523"
"cs_port_no"=dword:000493d6
"cs_lnk_down_tm"=dword:00000000
"host_ip_addr"="ofss3131523"
"host_dh_port_no"=dword:00001866
"host_fts_port_no"=dword:00001867
"host_dh_lnk_down_tm"=dword:0000001e
"host_fts_lnk_down_tm"=dword:0000001e
"host_lnk_down_retry_tm"=dword:0000000a
"wsi_port_no"=dword:000493d7
"wsi_stats_tm"=dword:0000003c
"gwi_port_no"=dword:000493d8
"gwi_stats_tm"=dword:0000003c
"fts_port_no"=dword:000493d9
"fts_stats_tm"=dword:0000003c
"recovery_flag"=dword:00000001
"tank_flush_tm"=dword:00000005
"trace_flag"=dword:00000000
"msg_time_out"=dword:0000003c
"cs_area"="C:\Flexcube\branch\log"
"fts_keep_alive_flag"=dword:00000000
"fts_keep_alive_tm"=dword:00000000
"branch_name"="demo"
"cons_port_no"=dword:000493da
"host_device_code"="9999"
"ENCRYPTION_ON"=dword:00000000
"host_name"=""

[HKEY_LOCAL_MACHINE\SOFTWARE\Wow6432Node\IFLEX\Flexcube\CommServer\999
9\CS Services]

[HKEY_LOCAL_MACHINE\SOFTWARE\Wow6432Node\IFLEX\Flexcube\CommServer\999
9\CS Services\0]

"appl_code"=dword:00000000
"appl_name"="WSI"
"flg_auto_start"=dword:00000001
"num_max_appl_wrk_thrds"=dword:00000004
"num_max_tcpip_wrk_thrds"=dword:00000001
"num_min_tcpip_wrk_thrds"=dword:00000001
"num_min_appl_wrk_thrds"=dword:00000004

[HKEY_LOCAL_MACHINE\SOFTWARE\Wow6432Node\IFLEX\Flexcube\CommServer\999
9\CS Services\1]

"appl_code"=dword:00000001
"appl_name"="GWI"
"flg_auto_start"=dword:00000001
"num_max_appl_wrk_thrds"=dword:00000004
"num_max_tcpip_wrk_thrds"=dword:00000001
"num_min_tcpip_wrk_thrds"=dword:00000001
"num_min_appl_wrk_thrds"=dword:00000001

[HKEY_LOCAL_MACHINE\SOFTWARE\Wow6432Node\IFLEX\Flexcube\CommServer\999
9\CS Services\2]

"appl_code"=dword:00000002
"appl_name"="FTS"
"flg_auto_start"=dword:00000001
"num_max_appl_wrk_thrds"=dword:00000004
"num_max_tcpip_wrk_thrds"=dword:00000001
"num_min_tcpip_wrk_thrds"=dword:00000001
"num_min_appl_wrk_thrds"=dword:00000002

[HKEY_LOCAL_MACHINE\SOFTWARE\Wow6432Node\IFLEX\Flexcube\CommServer\999
9\CS Services\3]

"appl_code"=dword:00000003
"appl_name"="CONS"
"flg_auto_start"=dword:00000001
"num_max_appl_wrk_thrds"=dword:00000001
"num_max_tcpip_wrk_thrds"=dword:00000001
"num_min_tcpip_wrk_thrds"=dword:00000001
"num_min_appl_wrk_thrds"=dword:00000001

[HKEY_LOCAL_MACHINE\SOFTWARE\Wow6432Node\IFLEX\Flexcube\CommServer\1]

[HKEY_LOCAL_MACHINE\SOFTWARE\Wow6432Node\IFLEX\Flexcube\CommServer\1\CS
S Parameters]

"cs_ip_addr"="ofss3131523"
"cs_port_no"=dword:000493d6
"cs_lnk_down_tm"=dword:00000000
"host_ip_addr"="ofss3131523"
"host_dh_port_no"=dword:00001866
"host_fts_port_no"=dword:00001867
"host_dh_lnk_down_tm"=dword:0000001e
"host_fts_lnk_down_tm"=dword:0000001e
"host_lnk_down_retry_tm"=dword:0000000a
"wsi_port_no"=dword:000493d7
"wsi_stats_tm"=dword:0000003c
"gwi_port_no"=dword:000493d8
"gwi_stats_tm"=dword:0000003c

"fts_port_no"=dword:000493d9
"fts_stats_tm"=dword:0000003c
"recovery_flag"=dword:00000001
"tank_flush_tm"=dword:00000005
"trace_flag"=dword:00000000
"msg_time_out"=dword:0000003c
"cs_area"="C:\\Flexcube\\branch\\log"
"fts_keep_alive_flag"=dword:00000000
"fts_keep_alive_tm"=dword:00000000
"branch_name"="demo"
"cons_port_no"=dword:000493da
"host_device_code"="1"
"ENCRYPTION_ON"=dword:00000000
"host_name"=""

[HKEY_LOCAL_MACHINE\\SOFTWARE\\Wow6432Node\\IFLEX\\Flexcube\\CommServer\\1\\CS Services]

[HKEY_LOCAL_MACHINE\\SOFTWARE\\Wow6432Node\\IFLEX\\Flexcube\\CommServer\\1\\CS Services\\0]

"appl_code"=dword:00000000
"appl_name"="WSI"
"flg_auto_start"=dword:00000001
"num_max_appl_wrk_thrds"=dword:00000004
"num_max_tcpip_wrk_thrds"=dword:00000001
"num_min_tcpip_wrk_thrds"=dword:00000001
"num_min_appl_wrk_thrds"=dword:00000004

[HKEY_LOCAL_MACHINE\\SOFTWARE\\Wow6432Node\\IFLEX\\Flexcube\\CommServer\\1\\CS Services\\1]

"appl_code"=dword:00000001
"appl_name"="GWI"
"flg_auto_start"=dword:00000001
"num_max_appl_wrk_thrds"=dword:00000004
"num_max_tcpip_wrk_thrds"=dword:00000001
"num_min_tcpip_wrk_thrds"=dword:00000001
"num_min_appl_wrk_thrds"=dword:00000001

[HKEY_LOCAL_MACHINE\\SOFTWARE\\Wow6432Node\\IFLEX\\Flexcube\\CommServer\\1\\CS Services\\2]

"appl_code"=dword:00000002
"appl_name"="FTS"
"flg_auto_start"=dword:00000001
"num_max_appl_wrk_thrds"=dword:00000004
"num_max_tcpip_wrk_thrds"=dword:00000001
"num_min_tcpip_wrk_thrds"=dword:00000001

"num_min_appl_wrk_thrds"=dword:00000002

[HKEY_LOCAL_MACHINE\SOFTWARE\Wow6432Node\FLEX\Flexcube\CommServer\1\C
S Services\3]

"appl_code"=dword:00000003

"appl_name"="CONS"

"flg_auto_start"=dword:00000001

"num_max_appl_wrk_thrds"=dword:00000001

"num_max_tcpip_wrk_thrds"=dword:00000001

"num_min_tcpip_wrk_thrds"=dword:00000001

"num_min_appl_wrk_thrds"=dword:00000001

4.)

[HKEY_LOCAL_MACHINE\SOFTWARE\Wow6432Node\FLEX\Flexcube\Download\DL1\S
torage\BRN9999]

"CLSID"="{EBDF5EFA-E206-4819-A027-435794E30CEB}"

"IID"="{22AAFFA6-E0F0-4160-8912-86C29C8B94EA}"

[HKEY_LOCAL_MACHINE\SOFTWARE\Wow6432Node\FLEX\Flexcube\Download\DL1\S
torage\BRN9999\interface]

"Dsn"="flexcn51"

"Password"="E4CBC33CA96CA63839E2E2E0A437F332"

"UserId"="fcrb51"

"TemplateURI"="C:\\Flexcube\\branch\\tbl\\"

"DataSetURI"="C:\\Flexcube\\branch\\dataseturi\\"

"CodEntity"="1"

[HKEY_LOCAL_MACHINE\SOFTWARE\Wow6432Node\FLEX\Flexcube\Download\DL1\S
torage\BRN1]

"CLSID"="{EBDF5EFA-E206-4819-A027-435794E30CEB}"

"IID"="{22AAFFA6-E0F0-4160-8912-86C29C8B94EA}"

[HKEY_LOCAL_MACHINE\SOFTWARE\Wow6432Node\FLEX\Flexcube\Download\DL1\S
torage\BRN1\interface]

"Dsn"="flexcn51"

"Password"="E4CBC33CA96CA63839E2E2E0A437F332"

"UserId"="fcrb51"

"TemplateURI"="C:\\Flexcube\\branch\\tbl\\"

"DataSetURI"="C:\\Flexcube\\branch\\dataseturi\\"

"CodEntity"="1"

5.)

[HKEY_LOCAL_MACHINE\SOFTWARE\Wow6432Node\FLEX\Flexcube\Report\BRN9999
]

"dbuserid"="fcrb51"

"dbdatasourcename"="flexcn51"

"dbpassword"="E4CBC33CA96CA63839E2E2E0A437F332"

```
"CodEntity"="1"
"CPDbDataSourceName"="flexcn51"
"CPDbPassword"="E4CBC33CA96CA63839E2E2E0A437F332"
"CPDbUserId"="fcrb51"
"CRDbDataSourceName"="flexcn51"
"CRDbPassword"="E4CBC33CA96CA63839E2E2E0A437F332"
"CRDbUserId"="fcrb51"
[HKEY_LOCAL_MACHINE\SOFTWARE\Wow6432Node\IFLEX\Flexcube\Report\BRN1]
"dbuserid"="fcrb51"
"dbdatasourcename"="flexcn51"
"dbpassword"="E4CBC33CA96CA63839E2E2E0A437F332"
"CodEntity"="1"
"CPDbDataSourceName"="flexcn51"
"CPDbPassword"="E4CBC33CA96CA63839E2E2E0A437F332"
"CPDbUserId"="fcrb51"
"CRDbDataSourceName"="flexcn51"
"CRDbPassword"="E4CBC33CA96CA63839E2E2E0A437F332"
"CRDbUserId"="fcrb51"
```

Similarly, we have to recreate the registry entries for other branches to be added.

Once all the changes are done ,save the file as a registry on any path and open the saved file with the registry editor. The changes will be applied in the registry.

NOTE: After applying all the changes please restart the branch services ,IIS and do a task kill(type “taskkill /f /im dllhost.exe” in command prompt) , only after which will the changes be reflected in the registry , as shown below :

